

Year 6 Parents' Evening - Tutor



Guilsborough Academy
Multi Academy Trust





The Guilsborough Way – Learning Without Limits



By attending Guilsborough Academy, you have agreed to our values to:

- ✓ Show mutual **respect** to everyone through tolerance, trust and honesty
- ✓ Take **responsibility** for your actions
- ✓ Appreciate others by the strength of their character and seek **equality** for all
- ✓ **Aspire** to inspire each other to succeed, showing grit and resilience to overcome any obstacles



The Team around the Year

Everyone is here to help you to achieve your very best

Supports students/families to improve their attendance

Teaching Assistants write student passports to help teachers understand how to support individual students

Your teachers work hard to deliver the best and most effective lessons



- Celebrates your successes!
- Ensures everyone behaves well
- Delivers wellbeing interventions to support individuals

Works with individual students/groups to help them overcome academic and personal barriers



The Guilsborough Way (This is how we do things)



- Every day we expect **4** things from you
- We call these our '**non-negotiables**':
 1. Be **on time** and attend all **lessons**
 2. Use **appropriate language** at all times
 3. Wear the **correct uniform**
 4. Have the **correct equipment**

Failure to meet these expectations will result in sanctions



The Guilsborough Way

Whole-School Routines – everyone follows the same routines

Lessons:

- Remove your coat and bag upon arrival
- Stand behind your designated seat
- Complete all work set to the best of your ability
- Follow all instructions given
- Wait silently behind your chair to be dismissed

Break/lunchtimes:

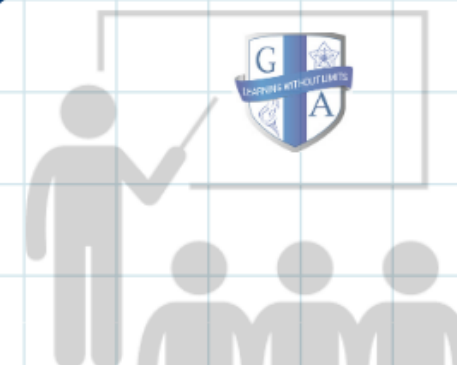
- Only use your designated year space and canteen
- Only 1 person in a toilet cubicle

School site:

- Walk sensibly, quietly and **directly** to your lesson
- Follow one-way systems on the stairs



The Guiltsborough Classroom



“Ready to learn”

- Coat off
- Blazer on
- Equipment on desk
- Silently complete the ‘Do Now’ activity



“Ready to leave”

- Blazer on
- Coat in hand
- Clear desk
- Stood silently behind your chair
- The teacher will dismiss each row after the bell rings



Points mean prizes

Throughout the year you will work towards achieving points to earn the following awards:

1. Tutor award
2. Assistant Head of Year award
3. Head of Year award
4. Senior Leadership Team award
5. Vice Principal award
6. Principal award

You and your parents/carers can see your points on Go4Schools



Points mean Prizes

Throughout the year, your points will go towards achieving these 6 awards:

Award	Points required
Form Tutor	250
Assistant Head of Year	500
Head of Year	750
Senior Leadership Team	1,000
Vice Principal	1,500
Principal	2000





Prizes



Jump the queue



Canteen vouchers



Shopping vouchers



Entertainment vouchers



Money off end of year rewards





Every positive point you
earn in the academic
year = 1 entry into the
prize draw to win an
iPad mini at the end of
the year
(KS3 & KS4 prize draw)





Communication

Your main contact is me as the form tutor – my e-mail address is on the business card (*please allow up to 2 working days for a reply*).

Miss Kelly or Miss Shirley

rkelly@guilbsborough.northants.sch.uk

sshirley@guilbsborough.northants.sch.uk

can be contacted for more urgent matters.

They are the Assistant Head of Year.

If you would like to see a member of staff, please arrange an appointment via email, telephone or contacting Reception.



School Website

<http://www.guilsborough.northants.sch.uk/>

Subject pages on the school website contain a wealth of supportive documents, revision resources and past exam papers.

Other information including electronic copies of letters can be found on the website.



My Child at School

We use My Child at School (MCAS - part of Bromcom), to enable parents to keep up to date with all elements of their child's education

We use MCAS for;

- Homework
- Reports
- Behaviour monitoring
- Attendance monitoring
- Timetable

In September you will receive a login for MCAS. We encourage you to check the site regularly to keep fully informed about your child's education.

Parents Evening information will be sent out and how to book nearer to the evening usually in the summer term.



Attendance

If your child cannot attend school due to illness, or another reason, please ring the absence line on:

01604 740641

Or email: absence@guilsborough.northants.sch.uk

Please Note: Government guidelines means that we can no longer authorise term time holidays . This means that if you take a holiday during term time you could be prosecuted.

More information regarding attendance can be found on the school website, clicking on 'parents' then 'attendance' [Guilsborough Academy - Attendance](#)



Times of the school day

Learning Without Limits

Year 7, 8 & 9

Reg	8.45 -9.10
P1	9.10 - 10.10
Break	10.10 - 10-30
P2	10.30 - 11.30
P3	11.30 - 12.30
Lunch	12.30 - 13.15
P4	13.15 - 14.15
P5	14.15 - 15.15

Year 10, 11, 12 & 13

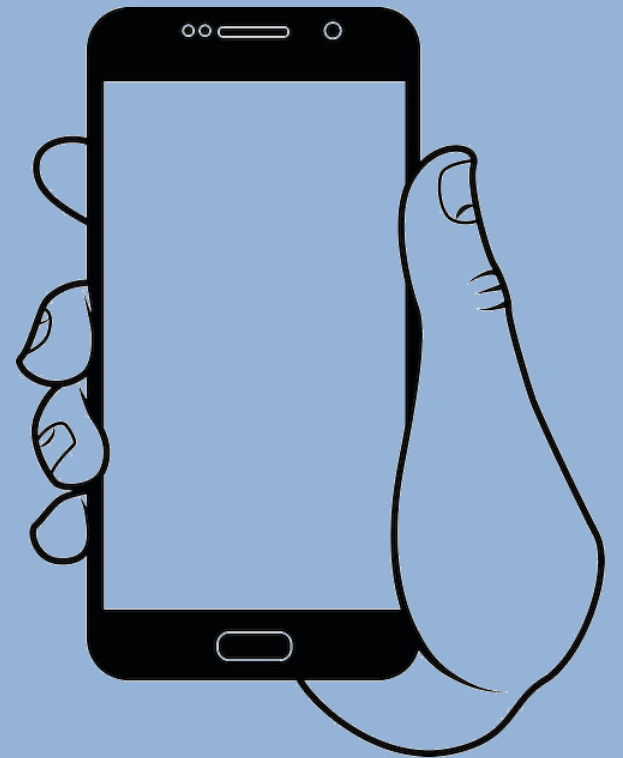
Reg	8.45 -9.10
P1	9.10 - 10.10
P2	10.10 - 11.10
Break	11.10 - 11.30
P3	11.30 - 12.30
P4	12.30 - 13.30
Lunch	13.30 - 14.15
P5	14.15 - 15.15



Make sure your phone is **never used, seen or heard**

When you arrive in school, you must:

1. Switch off your phone (and AirPods)
2. Place them in your bags
3. Confiscated phones will be returned at the end of the day and parents contacted, repeat offences will require phone to be handed in daily.





The Guilsborough Way

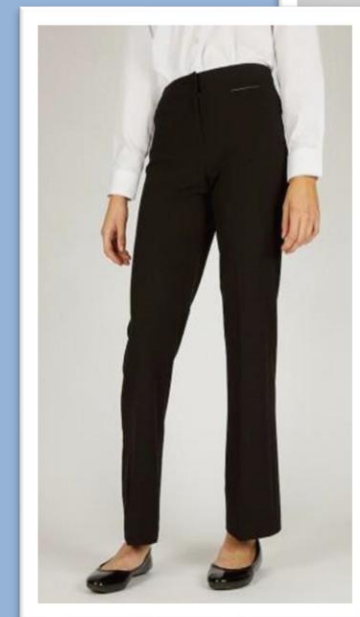
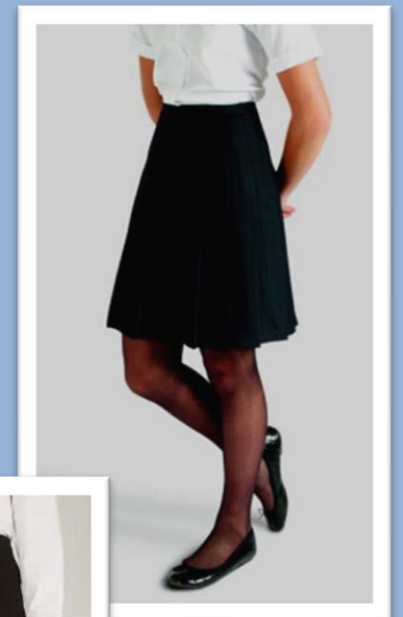
Non-negotiable #3 – Wear the correct uniform

The following items must be worn at **all times**:

- ✓ Blazer
- ✓ Tie
- ✓ White shirt, **tucked in**
- ✓ Black trousers or **pleated** knee-length skirt
 - No leggings or tracksuits
- ✓ Black shoes
 - No trainers (including Nike Air Force), sandals, boots or canvas shoes

Optional items:

- Black V-neck jumper
- Coat (outside only)
 - No hoodies, denim or leather jackets





The Guilsborough Way

Non-negotiable #3 – Wear the correct uniform

These are acceptable. Shoes can have lace-up, Velcro or buckle fastenings.



These are acceptable as they are not trainers/sports shoes. Please remove the additional tag from the laces.





The Guilsborough Way

Non-negotiable #3 – Wear the **correct uniform**

These are unacceptable as they are made of canvas.



These are unacceptable as they have a sports-brand logo stitched into the shoe or on the tongue.



These are unacceptable as they are sports-branded and not all black.



These are unacceptable as they have a sports-brand logo embossed in the leather. They are also classed as trainers on the brand's website.





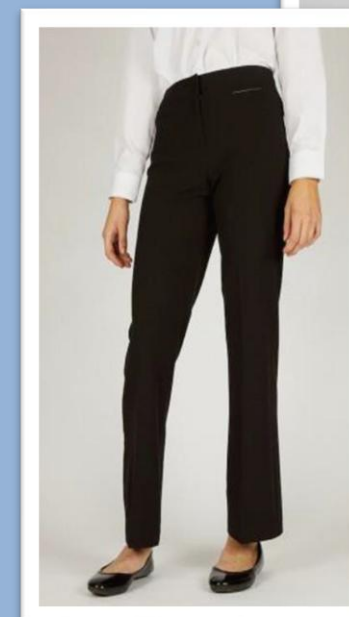
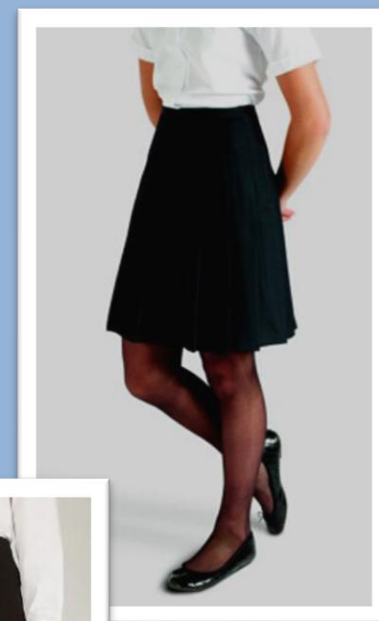
The Guilsborough Way

Non-negotiable #3 – Wear the correct uniform

- No jewelry other than 1 pair of studs in each ear
- No face piercings, ear spacers, nose studs, lip or tongue piercings
- Hair must be one colour with no extreme styles
- No false nails or nail varnish

What will happen if you wear incorrect uniform?

- Your Form Tutor will check your uniform every morning and log anything that is incorrect
- You will attend the detention at **break** time **every day** that you wear something incorrect
- This will be logged on Bromcom
- Bring a note from your parent/carer to explain why your uniform is incorrect and when it will be resolved





Equipment

Equipment will be checked once a week by form tutors. Every child will be expected to have their pencil case on the table each lesson to access all that they need during a lesson.

Please could your child bring:

- A clear pencil case (compulsory for exams)
- Two or more black pens and a pencil.
- A purple pen for CRAFT work
- Ruler
- Pencil sharpener and rubber
- A calculator (See next page)
- A maths geometry set
- They may also wish to have coloured pencils for some lessons



Casio FX83GT-CW



We encourage the purchase of a Casio calculator like this for maths. This makes it easier for us as teachers to show the children where the correct buttons are located to support more difficult questions especially as we build up to GCSE years.



School Buses



All parents will receive a letter from the council informing them of the bus service they have been assigned to, these were sent some time ago. The exception will be those not in catchment areas for a free bus.

The contact details are:

01604 526431

SchoolTransport.NCC@westnorthants.gov.uk

If a parent wants to change the service their child is allocated to, they will need to contact the council.

Replacement bus passes if lost are ordered online and cost £25.

The bus passes will arrive during the summer, and we will have them ready for tutors to hand out on their first day.



School Buses

The 2024/25 year bus passes will be issued to students on their return in September. As a reminder:

- Students must have their bus pass with them at **ALL** times and show the driver on boarding the bus.
- If your child has lost or forgotten their bus pass, they must obtain a temporary pass.
- Temporary Bus Passes can be obtained only during **BREAK** and **LUNCH** from Student Reception.
- Passes cannot be obtained at the end of the day as there is insufficient time to issue the pass without the possibility that they may miss the bus.
- Permanent bus pass replacements are obtained through the council websites at a cost of £25.
- Students are issued a pass for a specific route. This is to ensure student safety by loading the vehicles to agreed levels. In the event of a breakdown/accident we need to be sure which students are on the vehicle.
- Students are not able to travel on a bus which they are not assigned to.



Pupil Premium Information

The Pupil Premium is additional school funding for disadvantaged children. It is paid directly to your child's school to improve the quality of their education.

Your child's school may be entitled to additional Pupil Premium funding if you receive one of a number of benefits.

<http://www3.northamptonshire.gov.uk/council/services/children-families-education/schools-and-education/Pages/pupil-premium.aspx>



First Day – Wednesday 3rd September

- Years 7 and 12 will start back on Wednesday 3rd September.
- Please wear uniform.
- No need to bring PE kit.
- Bring your pencil case with all equipment.
- Students should head to the hall for assembly in the morning.



Dates for your Diary

Wednesday	03 September 2025	Year 7 and 12 only
Tuesday	9 September 2025	Year 7 Information evening 6.30-7.30pm
Monday	22 September 2025	Year 7 Meet the Tutor Evening 5-7pm
Date	tbc	Team Building Event
Thursday	11 June 2026	Year 7 Parents Evening 4.30-7.00pm A half
Thursday	18 June 2026	Year 7 Parents Evening 4.30-7.00pm B half



Lockers will be made available in September on a first come first served basis

THE UK'S NO.1 SCHOOL LOCKER.

Secure

LOCKER.RENTALS



SIMPLE. SAFE. SECURE.
RENT A LOCKER NOW.

Dear Parent,

We're delighted to be providing lockers for Guilsborough Academy.

The lockers are owned and maintained by Secure Locker Rentals and are available to rent for just **£38.00** per academic year (September to July).

The lockers will be available online from Friday 13th July 2023.

Simply visit www.locker.rentals to select your locker and make payment by Debit or Credit Card. Once payment is received, the combination for your locker is sent to you via text or email.

Yours Sincerely,
Secure Locker Rentals



All rentals are subject to our terms and conditions which are available during the booking process. Please note we are a separate entity from the school and all dealings will be directly with ourselves.



Questions

Please feel free to ask any questions you have...

Have a lovely summer and we look forward to September and welcoming you to the Guilsborough family.