

Year 6 Parents'

Evening 2021



Guilsborough Academy

Multi Academy Trust



Meet the Year 7 Tutor Team



Guilsborough Academy

Multi Academy Trust

Mr Woolridge

Head of Year 7

Hi, I'm Mr Woolridge and I'll be Head of Year 7 next year. I teach PE and I've been at Guilsborough Academy for 15 years.

I have a 9-year-old daughter, Everley, and a 4-year-old son, Thyan. My current Year 11 students know them quite well as I always talk about them in assembly! When they aren't keeping me busy, we enjoy taking our 3-year-old Labrador on long walks and going on bike rides or paddle boarding. I enjoy Rugby and since I stopped playing, I became a season ticket holder at Leicester Tigers. As a PE teacher I enjoy watching and playing all sports and also enjoy keeping fit and socialising with friends in my spare time.



Mrs Ette

Hello. My name is Mrs Ette and I have taught at Guilsborough for just a year! It's a very friendly and welcoming place where you'll soon feel at home.

As well as being part of the Year 7 team, I teach English. I love motorsports, playing bass guitar, ice-cream, and anything creative (music, movies, fashion, design, creative writing etc...).

Welcome to Guilsborough!



Mrs Shiels

Hello Year 7. My name is Mrs Shiels and I will be a Year 7 form tutor in September.

I teach Humanities and Geography at Guilsborough and have worked here for 8 years but have been a teacher for over 23 years.

I have two children; my daughter, who will be in Year 9 in September, and my son who will be in Year 5. We enjoy board games, long countryside walks and bike rides as a family. My hobbies are baking sweet things like cakes and cookies, growing my own vegetables, and running. I have run three half marathons but never a full marathon and enjoy going out for runs with my friends. I am very passionate about teaching Geography and aim to be as environmental as possible inside and outside of school. I am looking forward to meeting you all in September.



Mr Reynolds

Hello, I'm Mr Reynolds and I will be starting work with Guilsborough Academy in September as Head of Physics. I have been teaching for over 15 years and have been a tutor for much of this time. I have a 10 year old daughter who will also be starting her Year 7 studies in September, so understand completely what a big step it is moving up from Year 6. I have told her that I will be a Year 7 tutor in September and that I will be asking her for good ideas!

In my spare time, I enjoy family walks in the countryside with our 10 month old dog who has more than enough energy for all of us and is particularly fond of finding sticks. I also enjoy cycling and when I'm feeling really energetic, a bit of running.



Mrs Snook

Hello! I am Mrs Snook and I shall be a Year 7 Form Tutor in September.

I am an English and Media teacher and have worked at Guilsborough since 2008! I have two grown-up sons who both studied at Guilsborough too!

When I am not in school I enjoy woodworking, cake decorating and acting with my local theatre group – but not all at the same time!

You are going to have a wonderful time at Guilsborough – don't forget to ask if you need any help or advice.



Mr Bradshaw

Hi. I'm Mr Bradshaw and I look forward to meeting you, either as part of my tutor group or just around the school.

I teach English but love infusing my lessons with a variety of creative design, art and media activities to keep them thoroughly enjoyable and engaging. My speciality is in poetry and modern fiction, but I also love reading and interpreting Shakespeare, reviewing a variety of different movies and deciphering song lyrics. I love travelling, particularly along the Mediterranean coast, and spend a good portion of my summer holidays walking many miles across beaches, coastlines, forests and exploring places of cultural interest. At home, I have a deep passion for playing video games and occasionally writing parts of a novel I have been working on for several years but have yet to finish!

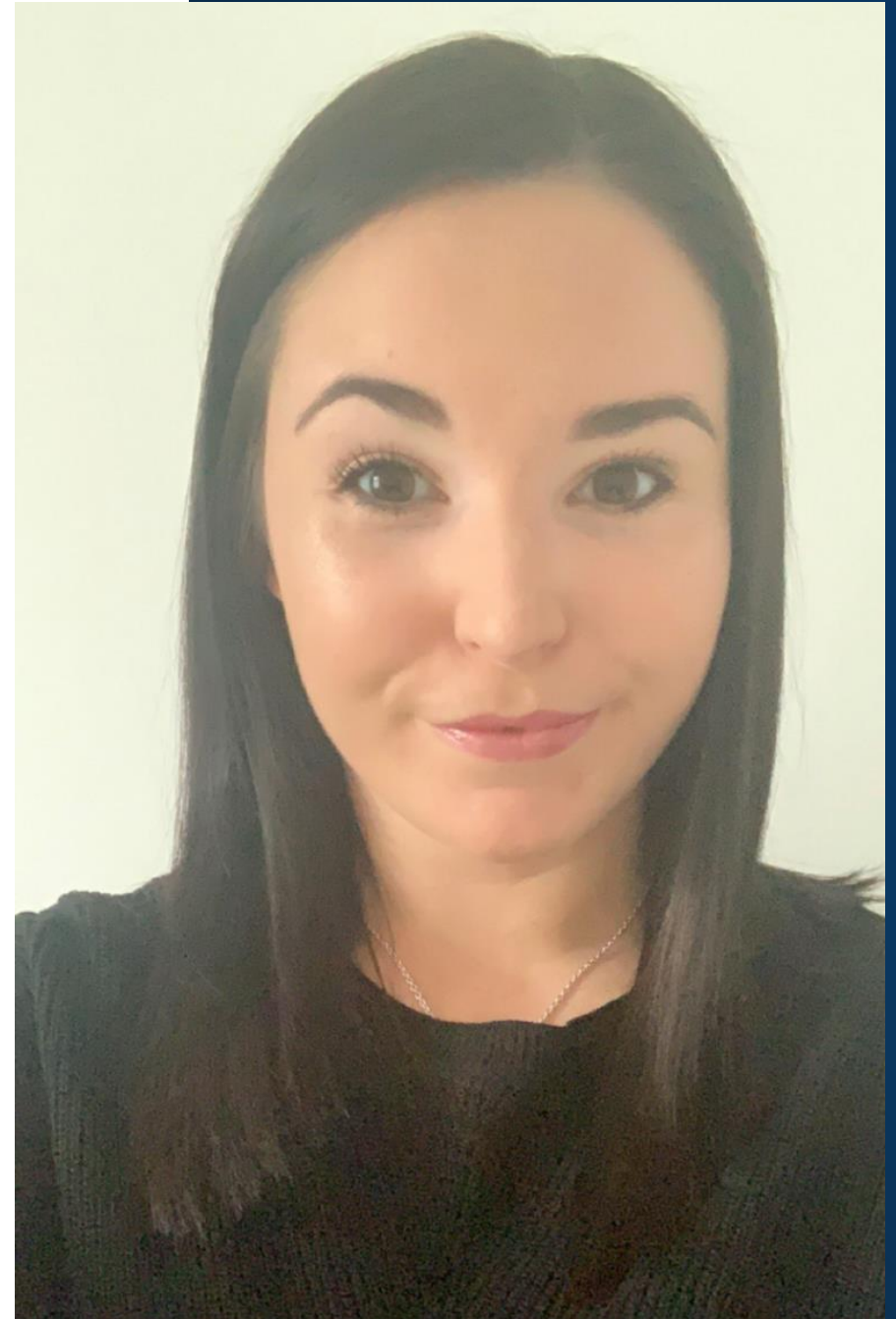
I am positive you will have a great experience at Guilsborough Academy.



Miss Sprague

Hi Year 7, I'm Miss Sprague and I am so excited to start my Guilsborough journey with you next year! I teach English and love all things Media.

One of my favourite things is to explore new places - my favourite so far is New York; I can't wait to travel again when we can. Of course, I love reading and immersing myself into a new book and I'm always open for recommendations to add to the list! I'm really looking forward to meeting you all and getting lost in the corridors together in the first week... or month!



Miss Kelly

Hi, my name is Miss Kelly and I will be new to Guilsborough Academy.

I have been teaching for more than 10 years. Hobbies include traveling and cooking. I have been lucky enough to visit over 40 countries, picking up recipes as I go.

I am a keen runner and I have competed in a few novice 5km fun runs over recent years.

I look forward to meeting the school community and supporting your child through the transition from Primary to Secondary school.



Christina Kelly

2021-06-24 07:00 UTC

Recorded by

Christina Kelly -SEK
Qatar-

Organized by

Christina Kelly -SEK
Qatar-

Mrs Grant

Hello, I am Mrs Grant and I will be one of the Year 7 tutors in September. I am a teacher of English and have worked at Guilsborough Academy for two years.

I have a 12 year old daughter, Erin, who started secondary school last year and a 10 year old son, Ted, who will be going into Year 6 in September.

My favourite thing to do in my spare time is spending time with my family, gardening, walking in the countryside and reading / listening to audio books. I am currently reading *Roll of Thunder Hear My Cry* by Mildred D. Taylor, and I am currently listening to *A Room With a View* by E.M. Forster.

I also enjoy foreign travel and languages. I lived in France for two years, so I speak French, and I am currently having Spanish lessons.

It's the first time for me to have a Year 7 tutor group, so I am very excited to meet you!

"A reader lives a thousand lives before he dies. The man who never reads lives only one." George R.R. Martin



Useful Information



Guilsborough Academy

Multi Academy Trust



Communication

- Your main contact is your form tutor – their e-mail address is on the business card you will receive shortly in your welcome pack. We always aim to reply within two working days.
- Mrs George (george@guilbsborough.northants.sch.uk) can be contacted for any matters regarding student welfare.
- If you ever need to contact a member of staff then please arrange an appointment via email or contacting reception who will pass your communication on to the necessary staff member – (info@guilbsborough.northants.sch.uk)



School Website and Student portal

- <http://www.guilsborough.northants.sch.uk/>
- Click on 'Student portal' to access the Virtual Learning Environment (you will need your student log-on)
- Subject pages contain a wealth of supportive documents, revision resources and past exam papers.
- Other announcements and electronic copies of letters can be found on the home page.
- We also use Microsoft TEAMS for virtual learning and class resources that students can access from home



EDULINK

- Edulink is used by both parents/carers and students to view records of attendance, achievement and behaviour.
- It is also where teachers will set your homework.
- You can also update parent/carer contact details here.



Planners and Organisation

- All Year 7 students will be provided with a student planner once starting in September.
- This contains their timetable and important information about Guilsborough Academy. There is also a diary where students can record homework and other important reminders.
- Please sign your child's planner on a weekly basis. You can also write any messages to your tutor here, which they will see when they sign student planners (once a week). This is a good link between home and school.
- Students need to check their timetable every evening and bring the correct equipment to school every day (PE kit, food technology etc).



Mobile Phones

- If you wish for your child to have access to their phone for the journey to and from school, it is their responsibility to keep this safe at all times.
- All students must have their phones switched off and stored in their bags at all times.
- Teachers will confiscate phones if they are used without permission.



Attendance

- If your child cannot attend school due to illness, or any another reason, please ring the school absence line on:
01604 749111
- Or email: Absence@Guilsborough.northants.sch.uk
- Please Note: Government guidelines means that we can no longer authorise term time holidays . This means that if you take a holiday during term time you could be prosecuted.
- More information regarding attendance can be found on the school website, clicking on 'parents' then 'attendance'.
<http://www.guilsborough.northants.sch.uk/for-parents/key-information/attendance>



Uniform

- Please ensure your child has the correct uniform for their first day as outlined in the transition pack – any issues regarding this please contact your tutor.



First Day

- Years 7 and 12 will start back on Friday 3rd September – this will be an induction day where students will meet teachers/their tutor and have a tour of the school. They will then take part in some 'getting to know you' activities as part of team-building and confidence.
- Please wear school uniform.
- Bring a packed lunch or the canteen will also be open, please make sure you have credit on your account.
- No need to bring PE kit
- Bring a pencil case with all equipment (those who have ordered calculators and stationary packs will receive them on the first day back in September)
- Students should head to the main hall for assembly in the morning, they will be directed here from the bus.
- Bring your workbooks which were sent to you.



Pupil Premium Information

- The Pupil Premium is additional school funding for disadvantaged children. It is paid directly to your child's school to improve the quality of their education.
- Your child's school may be entitled to additional Pupil Premium funding if you receive one of a number of benefits (please follow link below for further information).
- <https://www.northamptonshire.gov.uk/councilservices/children-families-education/schools-and-education/Pages/pupil-premium.aspx>



Frequently Asked Questions

- **How will our parents know how we are getting on?**

We have a computer system where staff record good things you are doing and any negative things that happen too. Your parents can get this information as soon as it goes on through the app called 'EduLink'. This means your parents always know what has been happening in your school day. We also give out rewards for students who get lots of positive comments – we call these House Points. We also have regular celebration assemblies where we celebrate your successes both individually and as a collective group of students.

- **Is there a house system?**

All students are linked to a school house and there are various inter-house sporting competitions.

The four houses are known as Rockingham, Everdon, Whittlebury and Salcey.

Frequently Asked Questions



Guilsborough Academy

Multi Academy Trust



Frequently Asked Questions

- **What is a form group?**

Every student at Guilsborough Academy has a form group. You will spend the first part of each day with your form group. There will be around 30 students in your form and you will have a form tutor. Their role is to help you with your work and they are the first person you should go to if you need help or have any questions/concerns.

- **Will I be in the same form group as my friends?**

We try to put people in a form group with others from their primary school so that you know someone. We do not want you to feel isolated so we ask your Year 6 teachers who you get on with. We use that information to help us put together the form groups. When you are at secondary school you have lots of different lessons in different teaching groups so you will meet lots of new people and make lots of new friends too.



Frequently Asked Questions

- **How do I know which bus to catch and where to get on and off?**

There will be a bus stop close to where you live where you will get on the bus each morning. When you arrive at school each morning there are members of staff who will help direct you where you need to go. After the last lesson of each day, you will go to the bus park and there are lots of staff on hand to help you get to the correct bus. If you are not sure you just need to ask. In the very unlikely event that you miss your school bus we will make sure that you are looked after and that you are able to get home safely.



Frequently Asked Questions

- **What happens if you are late to school or are late to a lesson?**
- **If you are late - When you arrive you sign in at student reception.**

If you are walking to school you will need to be organised so that you are not late to school. You could try timing how long it takes from your house to school. Many students arrange to meet friends on route. If you are taking the bus, you do not need to worry if the bus is late – this is not your fault and you will not be punished if your bus is late. Your form tutor keeps a record of your attendance and punctuality in school. Students should aim to have an attendance of 96% or above. Being late to lessons may happen sometimes in your first couple of weeks as you get used to finding your way around the school buildings. If you get lost then other staff or older students will only be too happy to help you find your way. After a couple of weeks, we will expect you to be used to the school and you will need to be on time for your lessons.



Frequently Asked Questions

- **What happens if you get lost when you first arrive at Guilsborough Academy?**

Don't worry. You will soon find your way around. There are five main blocks called A, B, C, D and E. The school will seem a lot bigger than your primary school but you will soon get used to it and will be able to find your way around. Your school planner contains a map which will help you find your way around. If you do get lost just ask a teacher or another student and they will help you.

- **How much homework will you get?**

This really depends on the teacher and the subject. Your teachers know the appropriate amount to set you in Year 7. They will also set the homework through the 'EduLink' School App and they will always tell you how long to spend on the homework and what date it is due in. You will not get lots at a time, it will be spread out.

If you have any questions or concerns, speak to your class teacher or your tutor about it.



Frequently Asked Questions

- **Is the work really difficult?**

The work at secondary school is a continuation of what you have been learning at Primary. Some of the learning will be a recap of work you have already done at Primary. The teachers have planned the curriculum to build upon your learning at Primary so that it is both accessible but also gives you the right level of challenge.



Frequently Asked Questions

- **Is it true that secondary school teachers are really strict?**

We have high standards at Guilsborough Academy and expect students to behave really well and wear their uniform correctly. However, we want you to do well and we won't be any stricter than your primary teachers were. The main difference at secondary school is that you will have a lot more teachers because you have specialist teachers for each subject. You will find that we have the same high expectations for behaviour, attitude and work.



Frequently Asked Questions

- **What if I am the only person from my Primary School that is going to Guilsborough Academy?**

This often happens. Try not to worry, there will be people in your form group in the same situation that you can make friends with. We find that children quickly make new friends at school and your form tutor will look after you and check that everything is going well for you.

- **What are detentions given for?**

Detentions are given for people that do not follow the rules within school. They either take place at lunchtime or for more serious incidents they take place after school. The vast majority of our students do not get detentions and visitors to Guilsborough often comment on how well behaved students are within school.



Frequently Asked Questions

- **Will we be in sets?**

For some subjects, you will be placed in sets. Other subjects you will be taught in mixed ability groups. Where students are taught in sets, we take account of lots of different things including teachers' assessments from your Primary school. The sets can and do change throughout the year so you are not stuck in the set you are in from the start of the year.



Frequently Asked Questions

- **Who do I go to if I have a problem at Guilsborough?**

Your form tutor is the first person you should speak to if you have any issues at school. You also have Mr Woolridge, Head of Year, who is solely responsible for your year group as well as Mrs George, Pastoral support.

We also have members of staff responsible for safeguarding in school, including Mrs Lakey and Mrs York, who are able to help you with your worries, concerns or moments of crisis



Frequently Asked Questions

- **Do you need to bring in lunch money every day?**

Children all have an account and parents will pre-load this account with credit so you don't need money to buy your school lunch. You pay for your school lunch through this account either through a card or putting in a pin code. You will be shown how all of this works as part of your induction into the school.

If you ever run out the canteen can give you credit and will take your name.



Frequently Asked Questions

- **Are there lots of extra-curricular clubs?**

We have lots of extra-curricular clubs examples of which can be found on our website. We think it's really important that children have lots of extra-curricular opportunities. This makes lunchtime a really fun and interesting part of the day.

Sport, music, drama, the library, table top gaming.

- **How can I stay organised to keep on top of all my work?**

When you go to secondary school you have to be quite organised to remember to pack the right books, remember your PE kit and bring the correct equipment. Your form tutor will help you with organising this.

You will have a planner to help you record homework deadlines and make notes about things you need to remember! Make sure you get into good habits early on such as packing your bag the night before and making sure you have looked at your timetable.

Your parents have access to an app called 'EduLink'. They will be able to see what homework you have been set, what achievement points you have gained and any behaviour points. This can help you stay on track with your work.



Frequently Asked Questions

If you have any other questions then please e-mail:

Year6transition@guilsborough.northants.sch.uk

We look forward to meeting you properly in September and hope you have a lovely summer.

