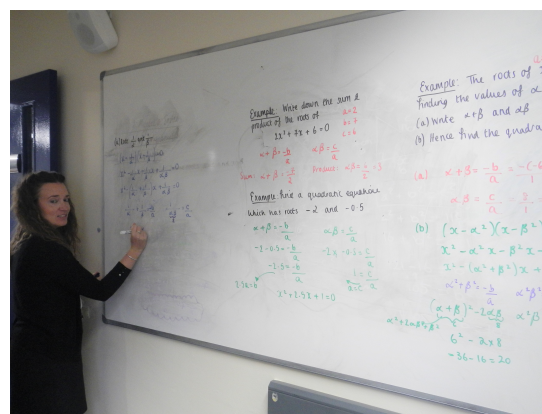


# Guilsborough Academy Sixth Form

## KS5 CURRICULUM

**Course Title:** A Level Further Mathematics

**Examination Board:** Edexcel



**Entry Requirements:** Please see Entry Requirements in the Application Form.

**Assessment:** 4 equally weighted units each examined in a 1h 30 minute exam

These modules cover Further Pure 1 and Further Pure 2 alongside two modules in Decision Maths.

### Is This Course Right For Me?

If you have thoroughly enjoyed Mathematics thus far and have a good understanding of algebraic techniques then Further Mathematics may be for you. In this course you will have the opportunity to explore familiar Core Mathematics in greater detail as well as meeting some higher level topics for the first time. By following the Further Mathematics course you will also be able to study more areas of applied Mathematics such as Decision Mathematics.

If you are thinking of studying Mathematics or a related course at university, then Further Mathematics is required for some courses and advisable in many others.

### **Unit Contents:**

**Further Core Pure Maths includes:** Matrices, Complex Numbers, Integration, Series, Proof by Induction, Vectors, Differential equations, Hyperbolic functions, Polar coordinates

**Decision Maths Includes:** Algorithms, Graphs, Networks, Critical Path Analysis, Game Theory, Transportation and Allocation problems, Dynamic Programming, Recurrence Relations

### **Progression:**

This course is suitable for those who would like to continue to study Mathematics at university, or pursue a career in a range of different areas including Physics and general science, Engineering, Banking and Finance, Teaching.

### **Example of university courses and grades required**

- Imperial College London BSc Mathematics A\* A\* Mathematics and Further Mathematics A in another subject.
- University of Bristol BSc Mathematics AAA including Mathematics and Further Mathematics.
- University of Manchester BEng Mechanical Engineering AAB including Mathematics.

### **Further Information Contact:**

Miss L Heritage, Director of Mathematics,  
heritagel@guiltsborough.northants.sch.uk