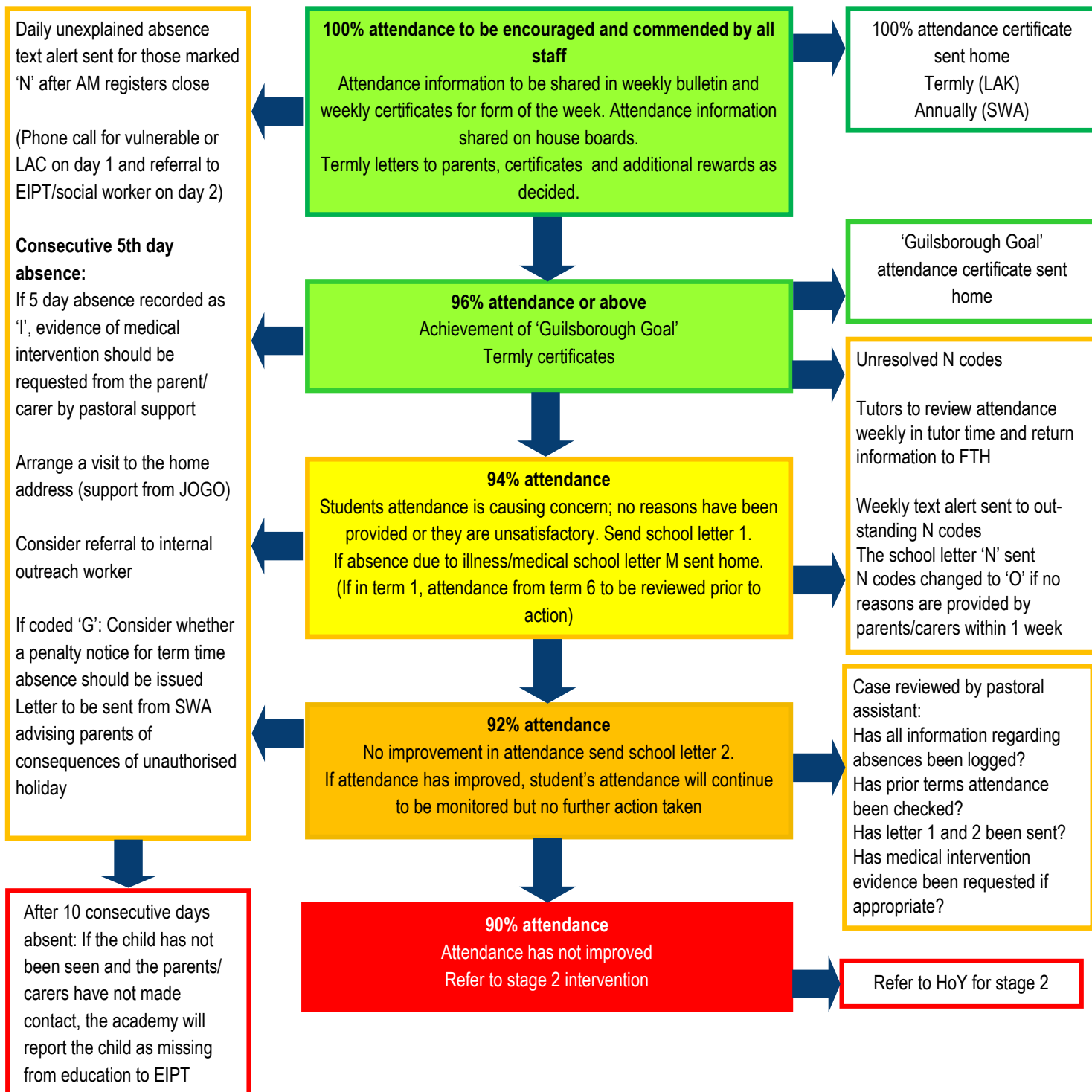




# Attendance Intervention Flowchart Stage 1

Managed by: Pastoral team and Attendance administrator

Attendance to be reviewed every 5 weeks



Attendance at Guilsborough Academy is a whole school responsibility and it is our expectation that students attend school every day when the school is open. Students are expected to attend school, arrive on time and attend all lessons.

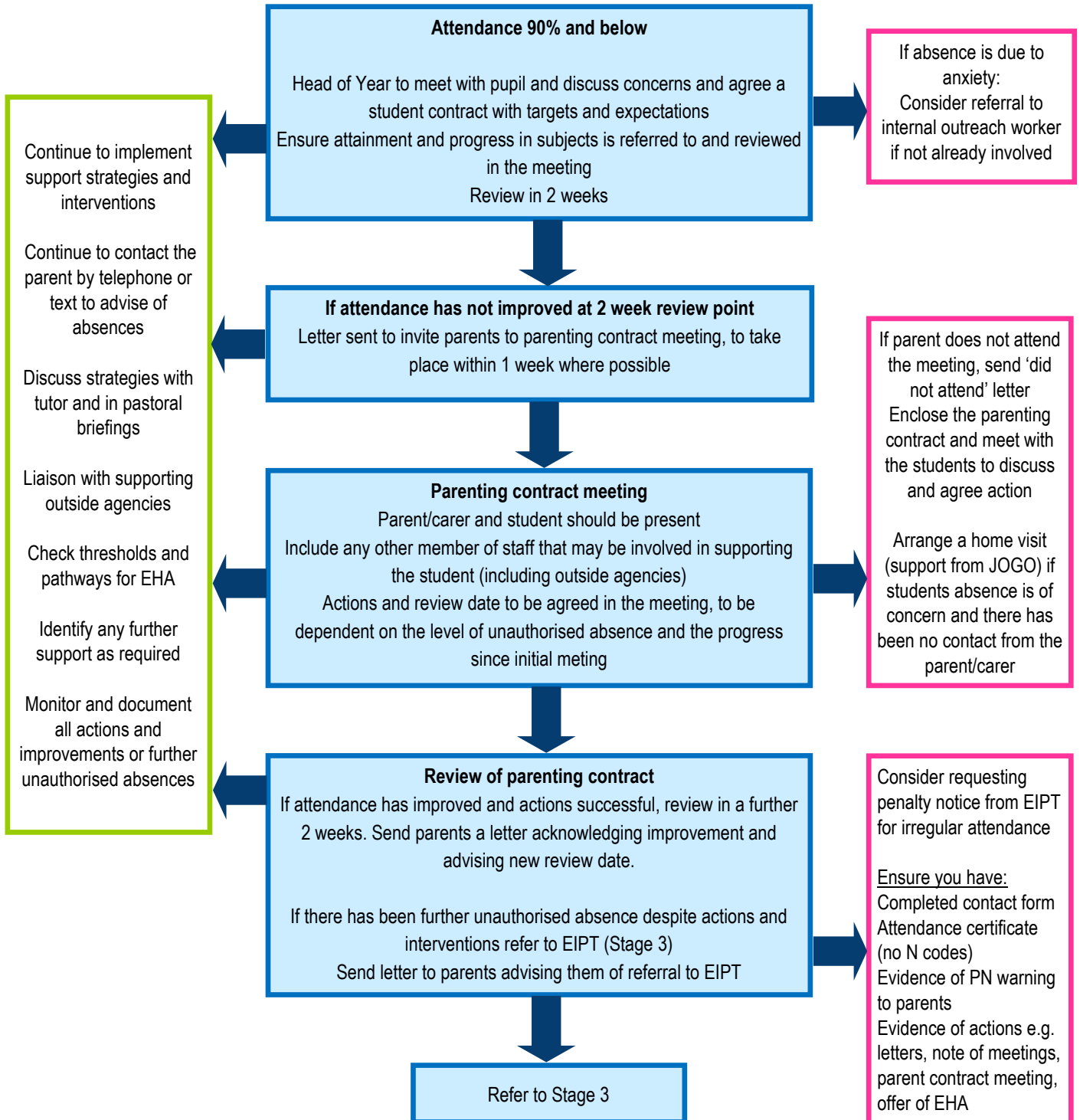
Guilsborough Goal: For every student to achieve at least 96% attendance over the course of the school year



# Attendance Intervention Flowchart

## Stage 2

Managed by: Head of Year



Attendance at Guilsborough Academy is a whole school responsibility and it is our expectation that students attend school every day when the school is open. Students are expected to attend school, arrive on time and attend all lessons.

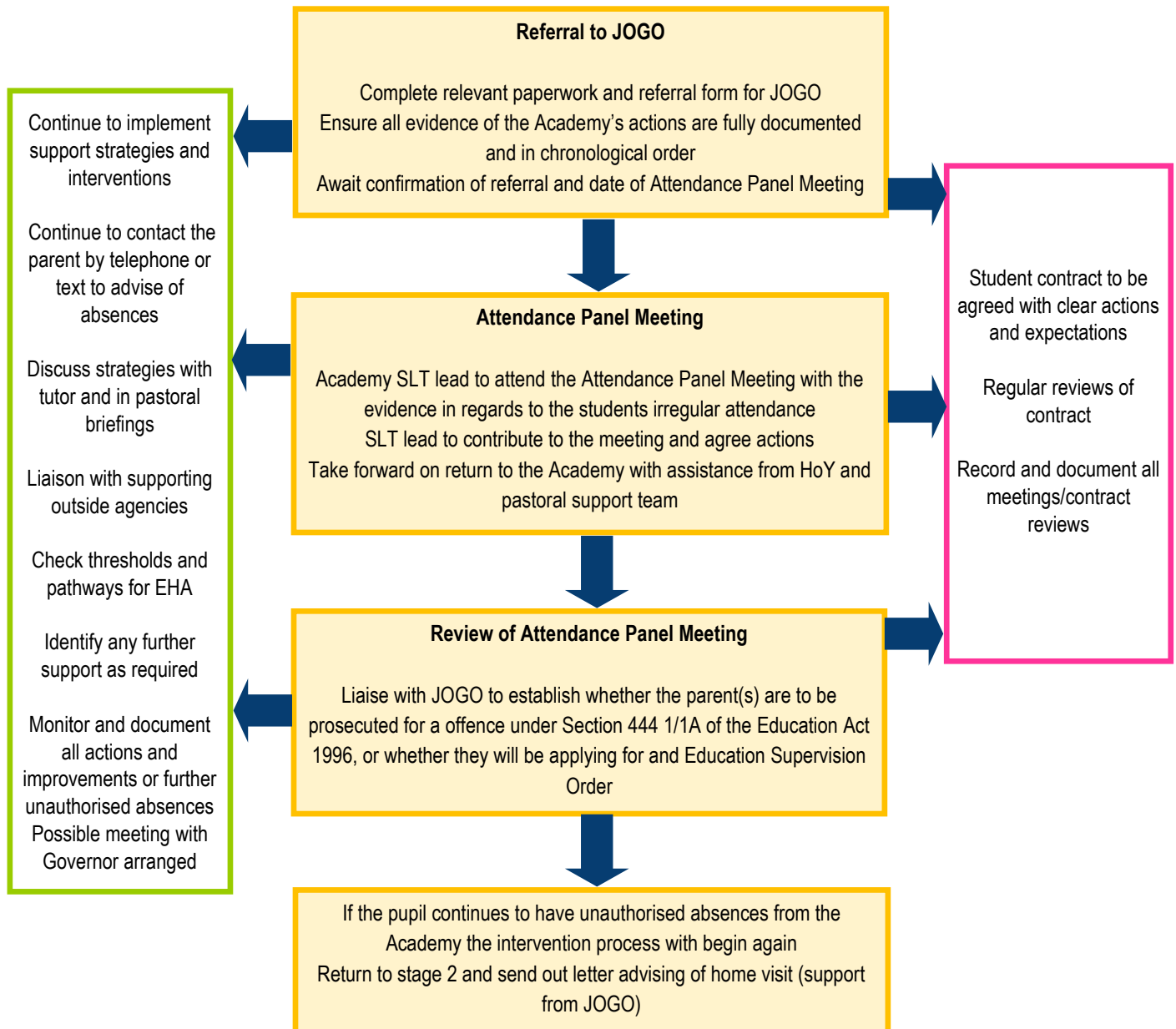
Guilsborough Goal: For every student to achieve at least 96% attendance over the course of the school year



# Attendance Intervention Flowchart

## Stage 3

Managed by: JOGO and supported by SLT



Attendance at Guilsborough Academy is a whole school responsibility and it is our expectation that students attend school every day when the school is open. Students are expected to attend school, arrive on time and attend all lessons.

Guilsborough Goal: For every student to achieve at least 96% attendance over the course of the school year