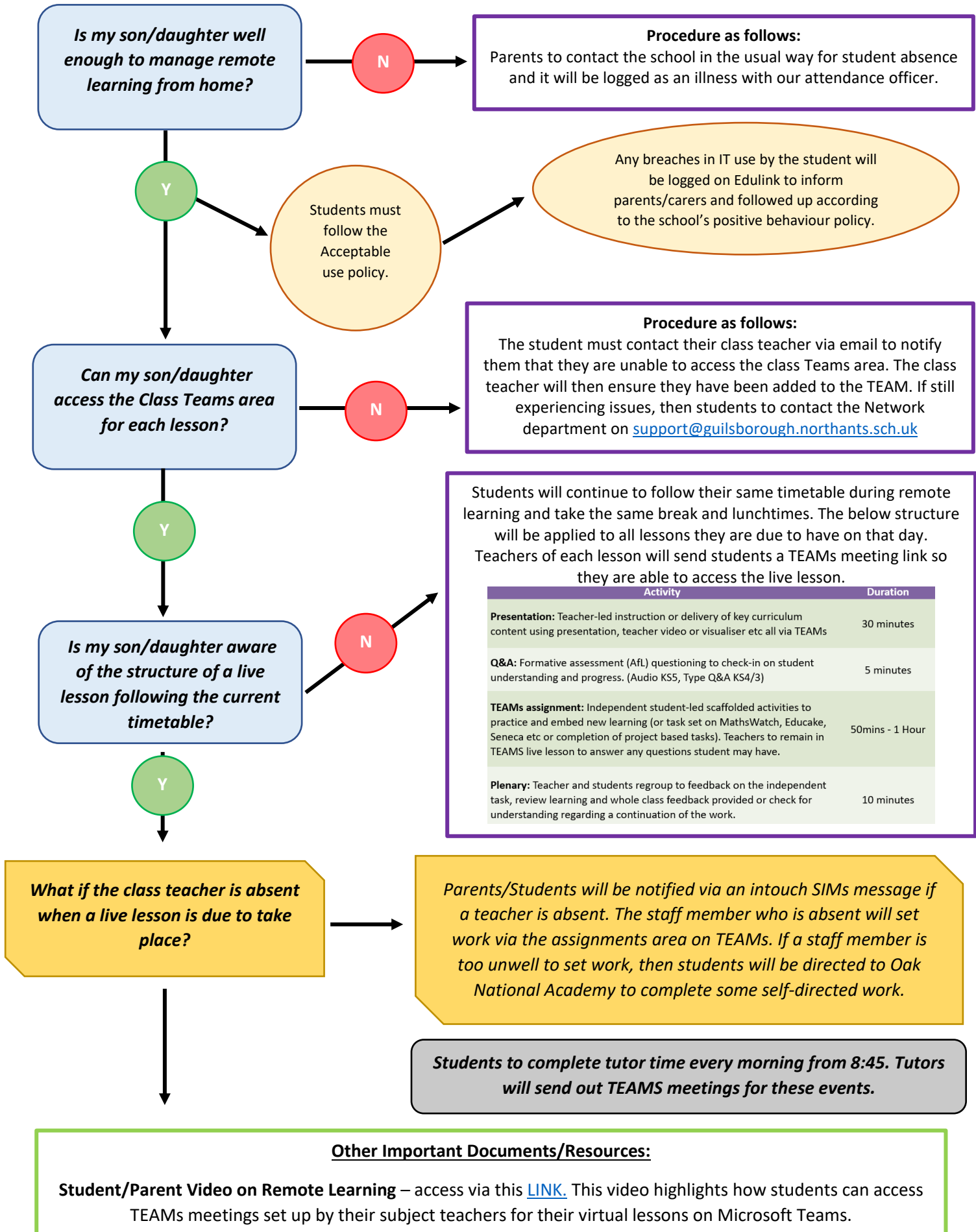
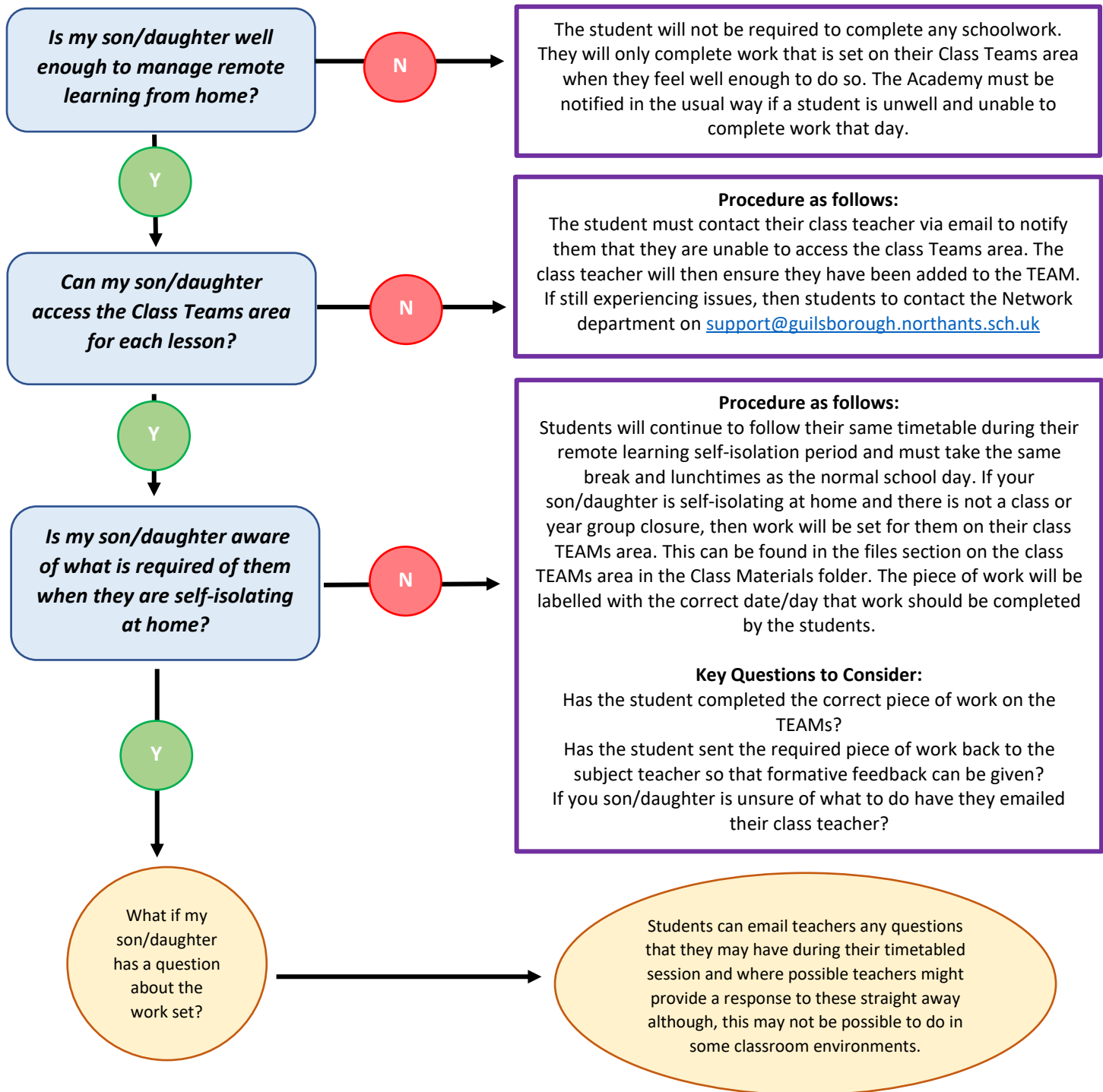


Remote Learning – Class, Year Group or Whole School Closure



Remote Learning – Individual Student Self-Isolating



The Student support team will complete tutor time every morning from 8:45 via the self-isolating TEAMS area. They will be in touch with the student to ensure they have access to this and to ensure they are aware of how to access work set by teachers.

Other Important Documents/Resources:

Student/Parent Video on Remote Learning (14minutes in for the self-isolation section) – access via this [LINK](#). This video highlights how students can access TEAMS meetings set up by their subject teachers for their virtual lessons on Microsoft Teams.