

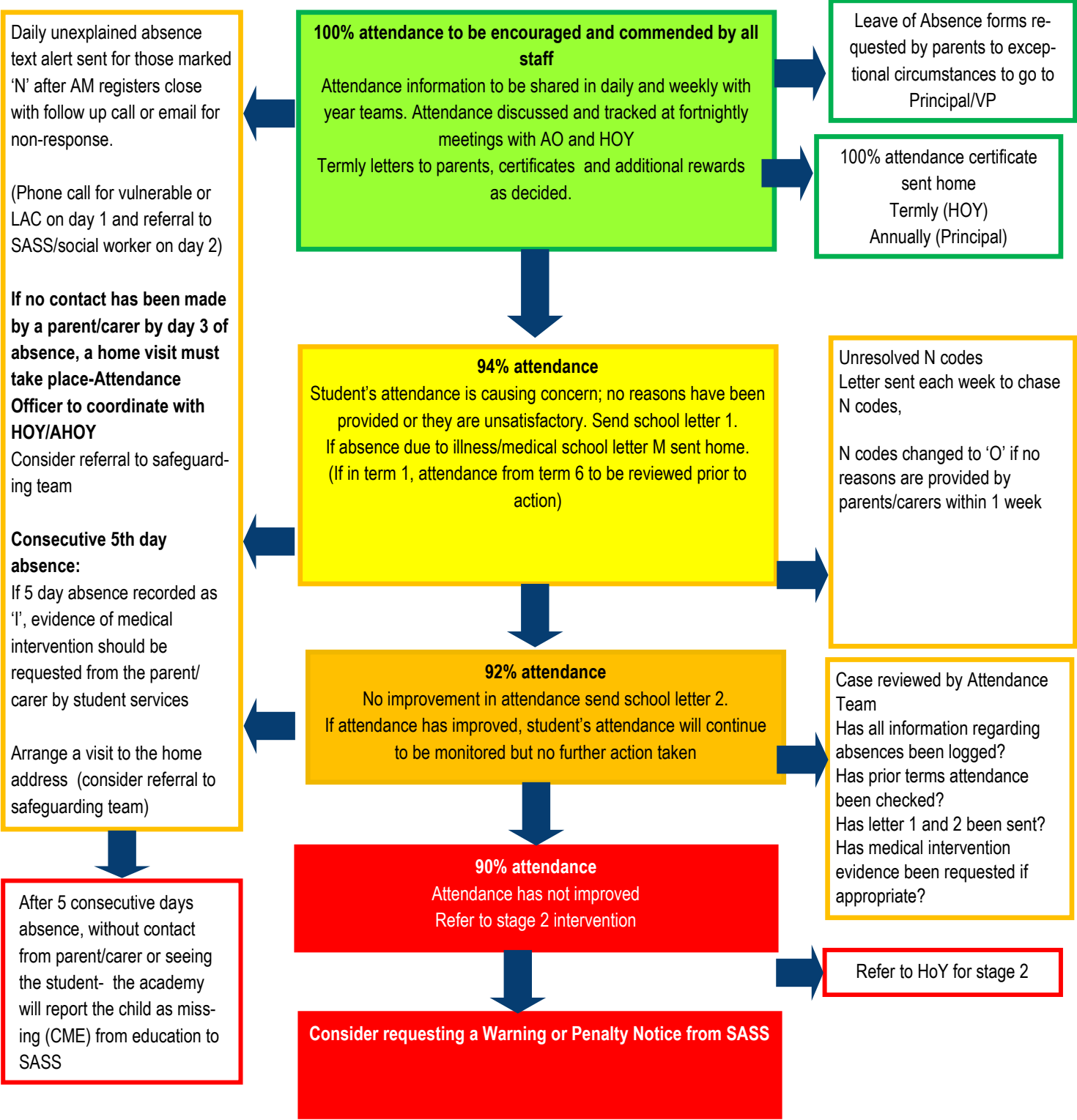


# Attendance Intervention Flowchart

## Stage 1

Managed by: Attendance Officer and Year Teams

Attendance to be reviewed every 5 weeks



Attendance at Guilsborough Academy is a whole school responsibility and it is our expectation that students attend school every day when the school is open. Students are expected to attend school, arrive on time and attend all lessons.

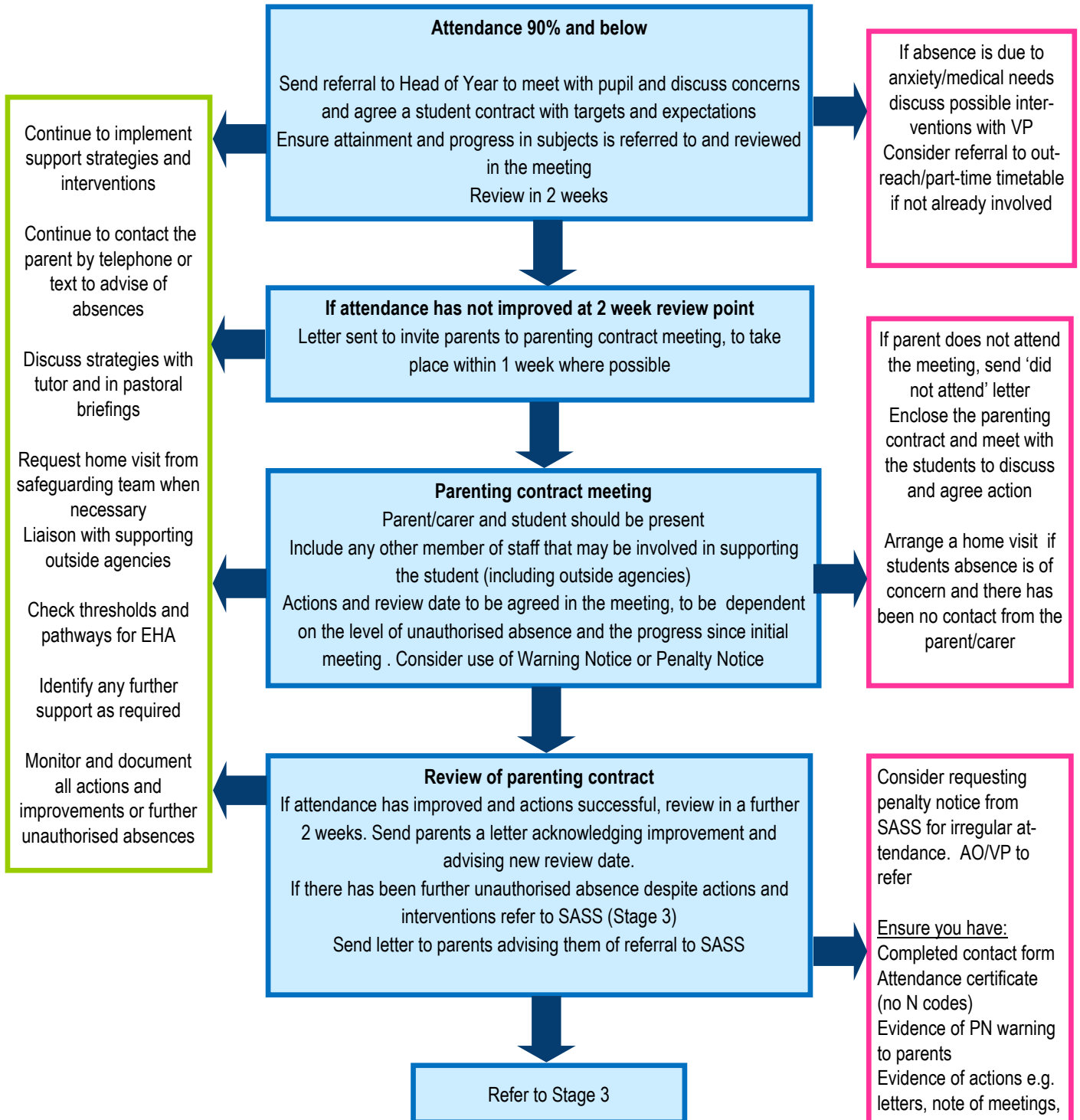
Guilsborough Goal: For every student to achieve at least 96% attendance over the course of the school year



# Attendance Intervention Flowchart

## Stage 2

Managed by: Head of Year



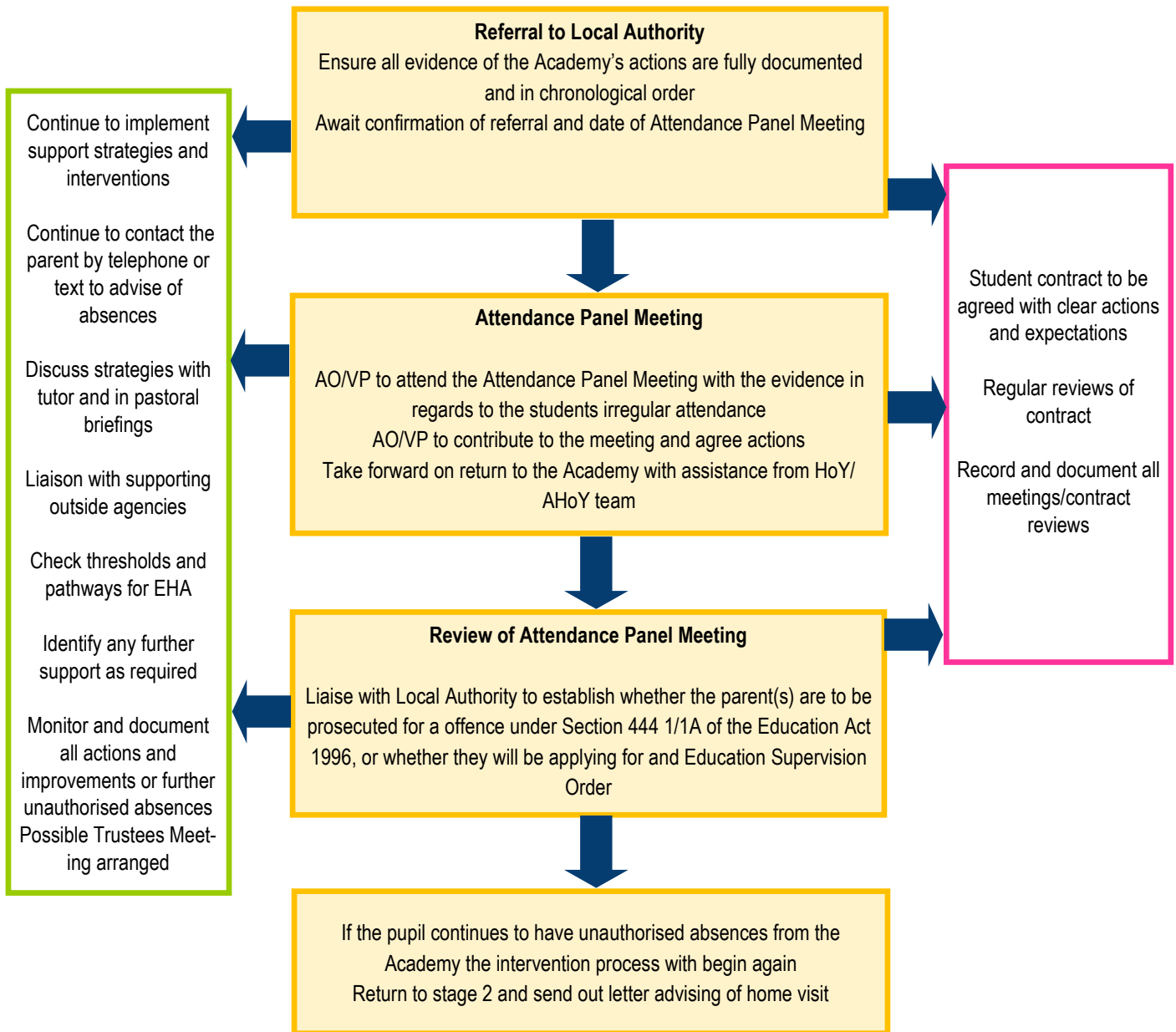
Attendance at Guilsborough Academy is a whole school responsibility and it is our expectation that students attend school every day when the school is open. Students are expected to attend school, arrive on time and attend all lessons.  
Guilsborough Goal: For every student to achieve at least 96% attendance over the course of the school year



# Attendance Intervention Flowchart

## Stage 3

Managed by: Attendance Officer/Vice Principal/SASS



Attendance at Guilsborough Academy is a whole school responsibility and it is our expectation that students attend school every day when the school is open. Students are expected to attend school, arrive on time and attend all lessons.  
Guilsborough Goal: For every student to achieve at least 96% attendance over the course of the school year